



Scan me to watch YouTube video.



Lazy Susan

Accumulation Table

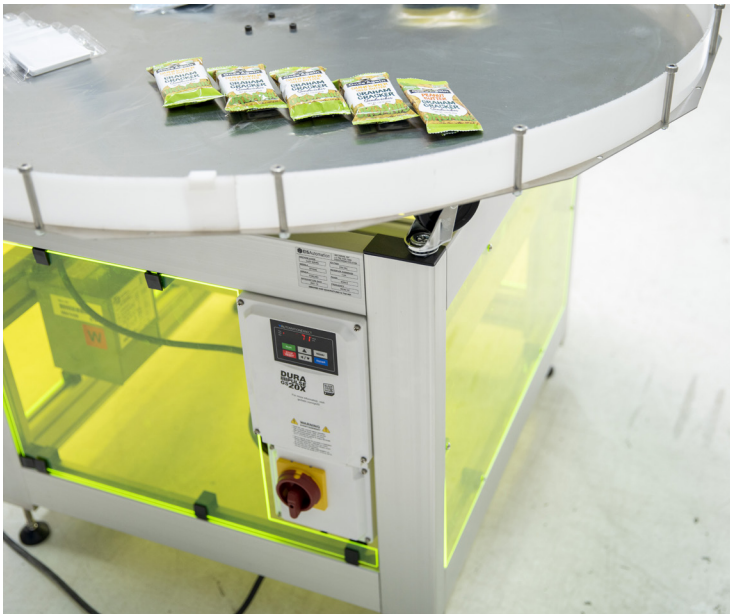
NOW WITH EASY CLEAN TABLE

Perfect add-on for:

- ▶ Shrink Wrap Machine
- ▶ Flow Wrapping Equipment
- ▶ General end-of-line accumulation

Industries:

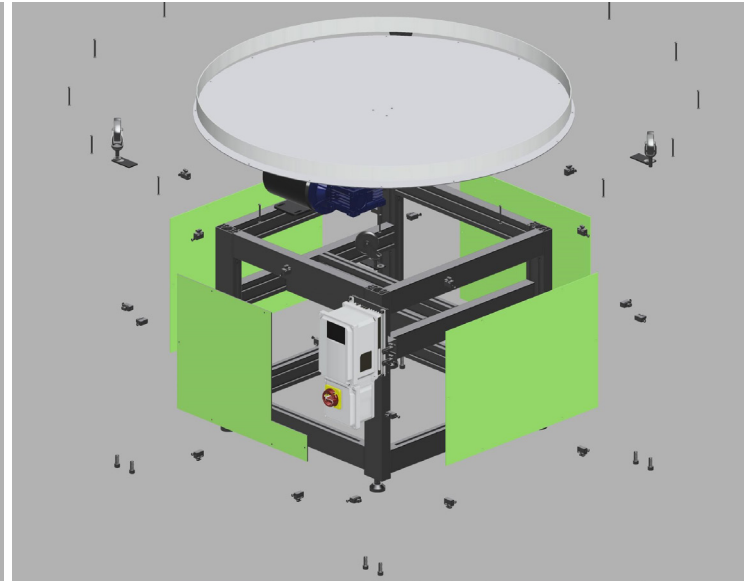
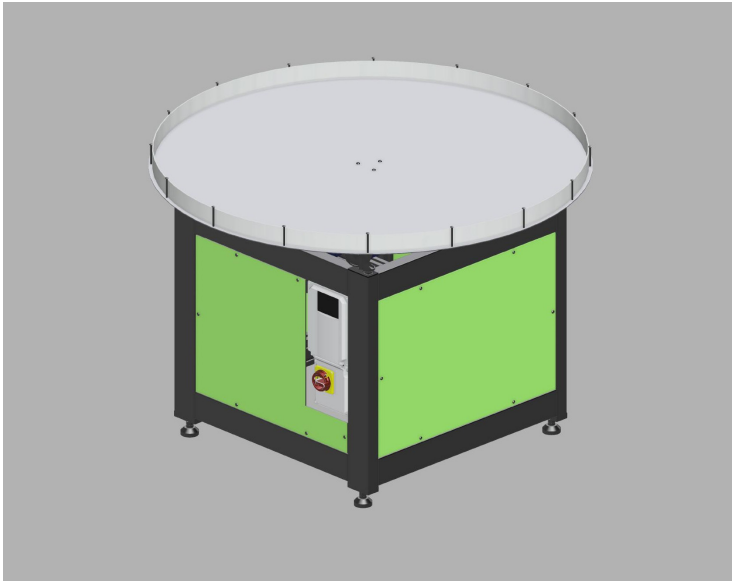
- ▶ Bakery
- ▶ Printing
- ▶ Household Goods
- ▶ Cosmetics
- ▶ Pharma and Nutraceutical
- ▶ General manufacturing



Images show Model #DT1200-120-SS

Designed and Built in the USA
ISO9001:2015 QMS manufacturing environment

 **EIS Automation**
Advantage Through Technology



3D design models of unit incl. exploded view

Available Models

Model	Table diameter	Turn table material	Power requirements
DT1200-120-AL	1200mm (~47.25")	Aluminum	120VAC, 1-phase, 3A
DT1200-120-SS	1200mm (~47.25")	Stainless Steel	120VAC, 1-phase, 3A
DT1200-220-AL	1200mm (~47.25")	Aluminum	220VAC, 1-phase, 1.5A
DT1200-220-SS	1200mm (~47.25")	Stainless Steel	220VAC, 1-phase, 1.5A
DT1500-220-AL	1500mm (~59")	Aluminum	220VAC, 1-phase, 1.5A
DT1500-220-SS	1500mm (~59")	Stainless Steel	220VAC, 1-phase, 1.5A



Designed and Built in the USA
 ISO9001:2015 QMS manufacturing environment

