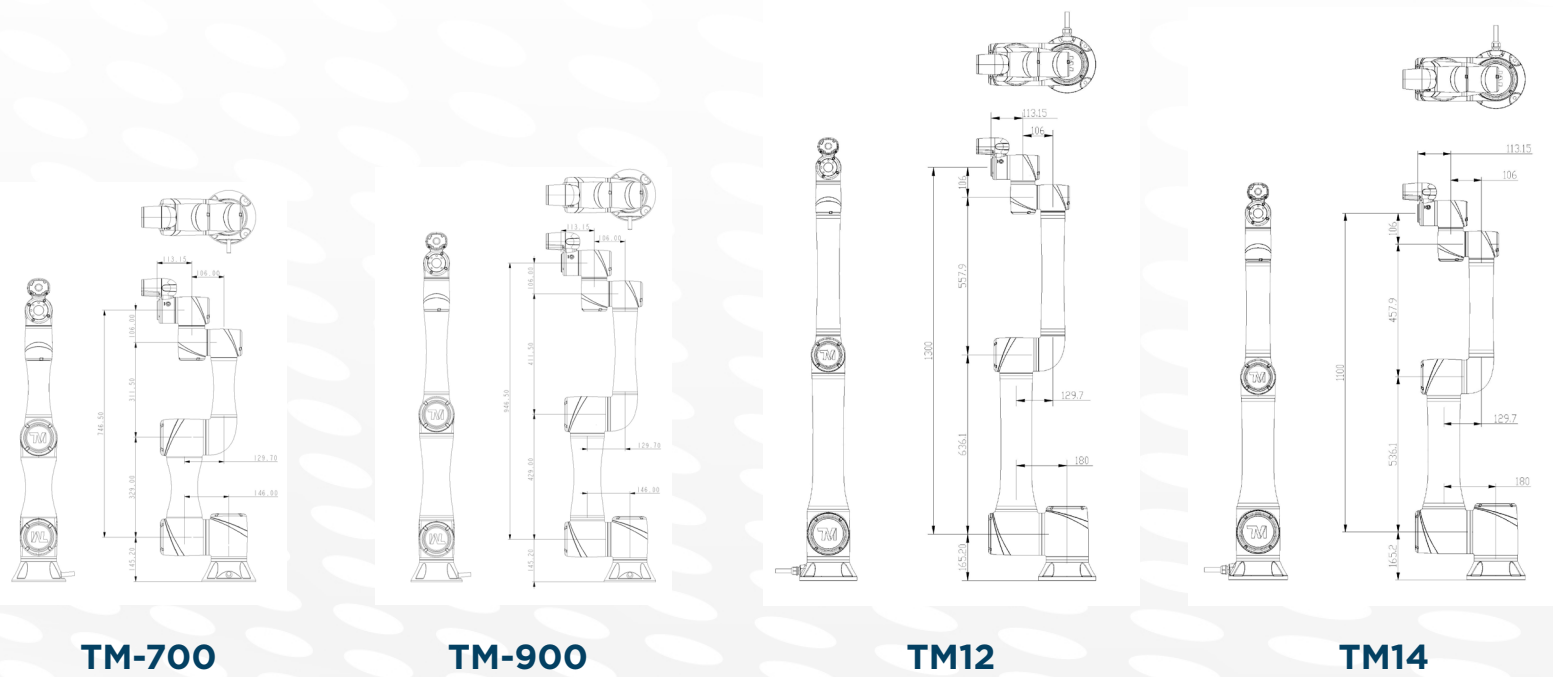
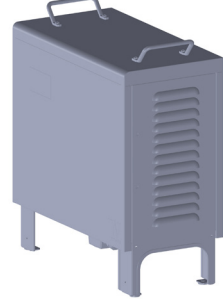
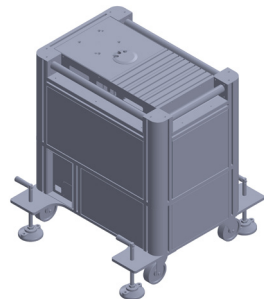
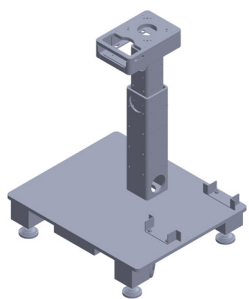


DIMENSIONS



TM5 STANDS

CONTROL BOX



Custom stands for all models are available upon request.

PLUG & PLAY END-EFFECTORS\*



Robotiq



TOYO



Schunk



Schmalz

SPECS



MODEL	TM5-700	TM5-900	TM12	TM14
Weight (kg)	22.1	22.6	33.3	32.6
Max Payload (kg)	6	4	12	14
Reach (mm)	700	900	1300	1100
Max Speed (m/s)	1.1	1.4	1.3	1.1
Joint Ranges: J1	± 270°		± 270°	
J2, J4, J5	± 180°		± 180°	
J3	± 155°		± 166°	± 163°
J6	± 270°		± 270°	
Joint Speeds: J1, J2	180°/s		120°/s	
J3	180°/s		180°/s	
J4, J5	225°/s		180°/s	150°/s
J6	225°/s		180°/s	
Repeatability (mm)	± 0.05		± 0.1	
IP (arm)	IP54			
Operating Temperature (°c)	0 to 50			
Power Supply	100-240 VAC, 50-60 Hz			
Max Power Capacity (w)	1400		2200	
I/O Ports: (in italics)	Control Box/Tool			
Digital In	16/4			
Digital In	16/4			
Analog In	2/1			
Analog Out	1/0			
I/O Interface	3 X COM, 1 X HDMI, 3 X LAN, 4 X USB2.0, 2 X USB3.0			
Communication	RS232, TCP/IP (Master), Modbus TCP/RTU (Master & Slave)			
Integrated Camera	5M pixels, color (AOI tasks: 5M; Others: 1.2M)			
I/O Power Supply	24V 1.5A (Control Box and Tool)			
Programming Environment	TM Flow, flow chart based			
SEMI S2 Certified	Yes, as an option			

Brought to you by: EISAutomation  
Advantage Through Technology

TM-SERIES

HUMAN-MACHINE  
COLLABORATION TAKEN  
TO THE NEXT LEVEL



SMART = SIMPLE = SAFE

\*Custom application based end-effectors and End-Of-Arm-Tooling (EOAT) available upon request.



# COBOTS TM

## THE FIRST CHOICE FOR FLEXIBLE AUTOMATION APPLICATIONS

- Promotes a safe and harmonious workplace between humans and machines.
- Allows for quick startup and operation with an easy-to-use graphical programming environment.
- Enables visual servoing, inspection, and measurement operations with built-in, vision-based robot control.
- Allows truly flexible, fast changeover with TMvision and landmark.
- Provides the tools and versatility for many manufacturing needs with the Plug & Play ecosystem.
- Integrates with mobile robots, enabling fully autonomous machine tending and logistics handling applications.



Assembly



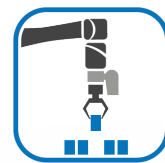
Dispensing



Machine Tending



Palletizing



Pick & Place



Screwdriving



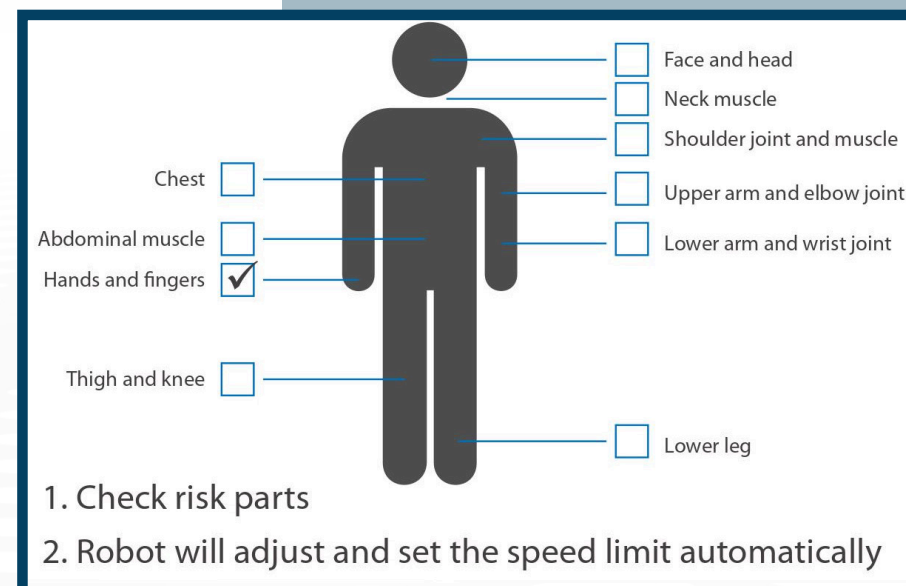
Visual Inspection

### PERFECT FOR

- Packaging
- Computer industry
- Communications industry
- Consumer industry
- Food industry
- CNC industry
- Automobile industry
- Semi-conductor
- Your industry here



Easy-to-use TM-Flow programming



Industry-leading safety features

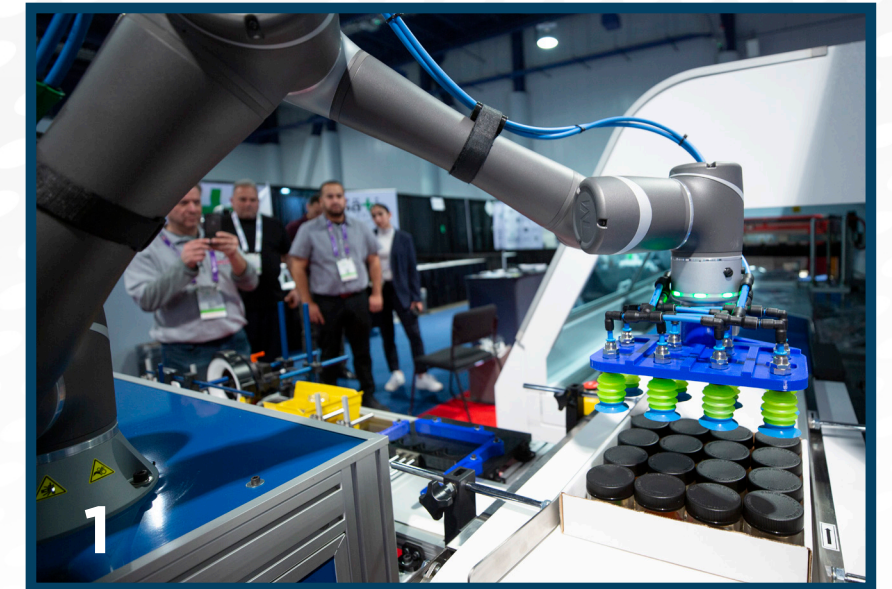
WITH THE POWERFUL BUILT-IN VISION SYSTEM AND TM FLOW™ USER INTERFACE, THE TM ROBOT CAN SEE, PROCESS, AND COMPLETE AUTOMATION TASKS ALONGSIDE HUMANS WITH EASE.

CREATE YOUR AUTOMATION TASK WITH TM'S INTUITIVE USER INTERFACE—AN ALL-GRAPHIC FLOW CHART BASED HMI. THE TM ROBOT IS ALSO EQUIPPED WITH HAND-GUIDING FUNCTIONS.

TM SERIES ROBOTS COMPLY WITH THE ISO 10218 HUMAN-ROBOT SAFETY REQUIREMENT, BRINGING US INTO THE ERA OF TRUE HUMAN-ROBOT COLLABORATION.

## COBOTS IN ACTION

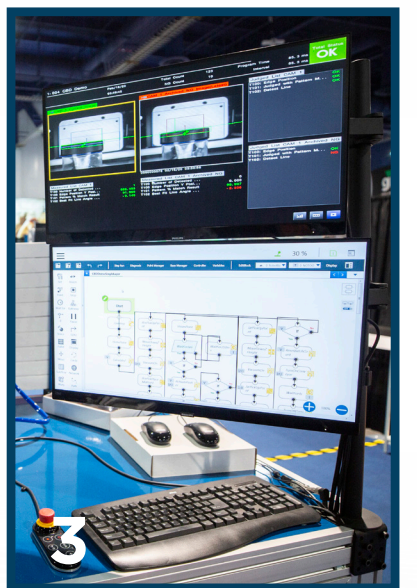
FOR ASSEMBLY, PACKAGING INSPECTION & PALLETIZING



TM5-900 CoBot Pick & Place as part of an automatic shrink wrap packaging line



Custom vacuum end-effector lifting a batch of 8 filled jars



Robot UI and TarsierMV Quality Control monitoring