



Intuitive Machine Vision

Ideal solution for many industries:

- Life Sciences
- Healthcare
- Packaging
- Printing
- Food & Beverage
- Manufacturing



Features

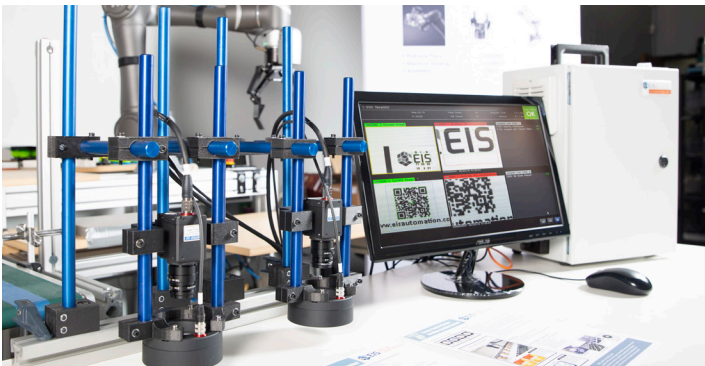
- Read any 1D and 2D code
- Version control
- Serialized product verification with Tarsier DV
- Presence/absence check
- Pattern search
- Measurement
- Contaminant detection
- Piece counting
- Auto-teach function
- Single or multi-camera setup
- Area scan or line scan systems

Integrate on Virtually any Equipment

- Conveying lines
- Packaging machinery
- Assembly lines
- Digital printing equipment
- Lab work stations

Ready-to-Install Solution

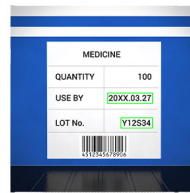
- Application-based trigger sensor
- Cameras
- Complete mounting bracket set
- Fully assembled control panel/enclosure
- Installation and training
- Post-sales support



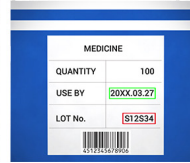
APPLICATION EXAMPLES



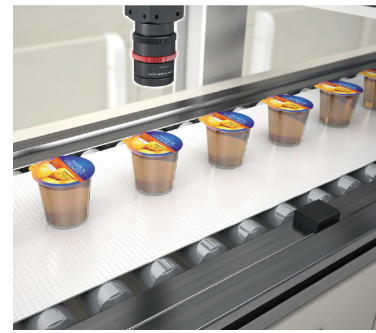
Lot Code



OK Image



NG Image



OCR Code Reader

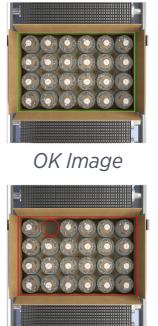


NG Image

OPTIONS	TARSIER MV
Read any 1D & 2D code	X
OCR (Optical Character Recognition)	X
Contamination Detection	X
Pattern search	X
Automatic position adjust	X
Logo Check	X
Fill level	X
Edge Detection	X
Object counting	X
Presence/absence check	X
Autoteach function	X
Max. cameras	4
Suitable for high-speed applications	X
Machine stop output	X
Best-in-class, user-friendly interface	X
Tarsier DV (Data Verification suite), optional	X
ProTrac (product tracking system), optional	X
Inline divert gate, optional	X
Power requirements	120VAC / 5AMPS



Presence/Absence



NG Image



Quality Control



NG Image

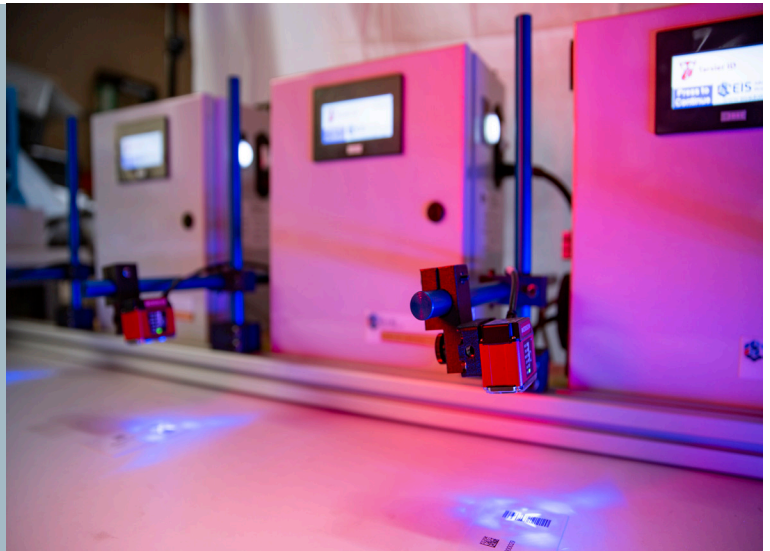


Tarsier Series

Barcode System

Ideal solution for many industries:

- Life Sciences
- Healthcare
- Packaging
- Printing
- Food & Beverage
- Manufacturing



System Overview

- User-friendly setup
- Read 1D and 2D codes
- OCR (Optical Character Recognition) with MV Model
- 100% production control
- Serialized product verification (with Tarsier DV)
- Push results to network
- Easily integrate with our product tracker
- Single or multi-reader setup
- Stainless steel option for food and pack

Integrate on Virtually any Equipment

- Conveying lines
- Packaging machinery
- Assembly lines
- Digital printing equipment
- Lab work stations

Ready-to-Install Solution

- Application-based trigger sensor
- Barcode readers
- Complete mounting bracket set
- Fully assembled control panel/enclosure
- Installation and training
- Post-sales support

Tarsier DV Suite

PLC

Disconnect Connected

Barcode Scanner

Disconnect Connected

Mode

Setup Manual Trigger

Run ☒ Sequential ☐ Batch

Job

Load Job File Set Starting Barcode

Starting Barcode: EIS-09223 Current Barcode: EIS-45362

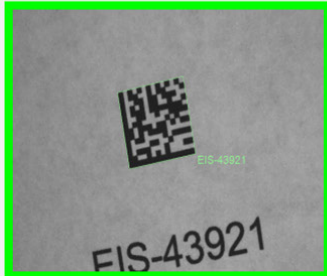
-EIS-09223
 -EIS-09711
 -EIS-12345
 -EIS-17300
 End of Batch - 4 barcodes
 -EIS-24532
 -EIS-24783
 -EIS-30001
 -EIS-32974
 -EIS-43921
 -EIS-45362
 End of Batch - 6 barcodes
 -EIS-55588

20 Barcodes 4 Batches

Clear

Barcode Scanner Output

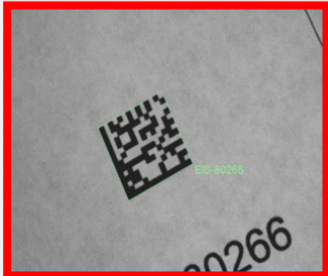
Last Scanned Image



Timestamp: 20190603141552
Expected: EIS-43921
Decoded: EIS-43921

Clear

Last Missed Read



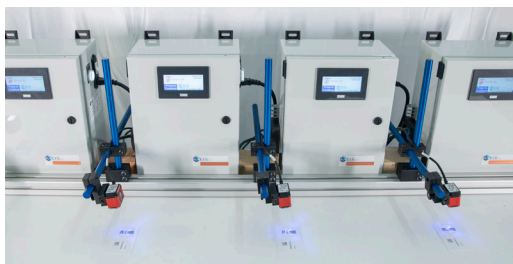
Timestamp: 20190603141511
Expected: EIS-30001
Decoded: EIS-80266

Clear

20190603141433, EIS-09223, EIS-09223, MATCH
 20190603141436, EIS-09711, EIS-09711, MATCH
 20190603141439, EIS-12345, EIS-12345, MATCH
 20190603141441, EIS-17300, EIS-17300, MATCH
 20190603141442, BATCH, BATCH, BATCH
 20190603141457, EIS-24532, EIS-24532, MATCH
 20190603141459, EIS-24783, EIS-24783, MATCH
 20190603141511, EIS-30001, EIS-80266, FAIL
 20190603141531, EIS-32974, EIS-32974, MATCH
 20190603141552, EIS-43921, EIS-43921, MATCH

9 Barcodes Scanned 1 Batch Completed

Save Results Clear



FEATURES	TARSIER IDe	TARSIER ID	TARSIER ID+
Read any 1D & 2D code	X	X	X
OCR (Optical Character Recognition)			X
Teach and verify single code	X	X	X
Maximum readers per system	2	4	4
10" touch screen	X		
Industrial PC, Windows 10 IoT, Monitor or HMI		X	X
Tarsier DV (Data Verification Suite Software)		X	X
Control panel with PLC I/O interface for machine stop, divert gate, LED light tower	X	X	X
Complete mounting bracket set	X	X	X
Trigger sensor (product detection)	X	X	X
Variable data handling		X	X
Production log file		X	X
NG image storage		X	X
Database export		X	X
ProTrac product tracking (optional)	X	X	X
Inline divert gate (optional)	X	X	X
Power requirements	120VAC / 5AMPS	120VAC / 5AMPS	120VAC / 5AMPS