



Autonomous Mobile Robot

OMRON MD Series AMR

# The world's most innovative mobile robot solution

1933

Omron established

210

Locations Worldwide

4000+

mobile robots  
deployed globally

20+

years of  
robotics experience

OMRON mobile robots are autonomous mobile robots (AMRs) designed to dramatically increase productivity in manufacturing and logistics operations by increasing throughput, eliminating errors and improving material traceability.

The MD Series offers industry innovations with

- 650 kg or 900 kg medium capacity payload
- Dynamic intelligent 360° safety
- Integrated automation controller

Omron offers a complete family of mobile robots to provide scalability and large-scale fleet management

- Best-in-class navigation and safety
- Best-in-class fleet management
- Easy integration and scalability



# Medium Duty Ideal Capacity

The OMRON Medium-Duty (MD) series of mobile robots provides more options for moving more material.

The OMRON MD Series offers a mid-range payload capacity ranging from 650 kg to 900 kg. The medium-range payload capacity to provide customers with more options for transporting parts and products around their facility. The size allows for use with European, US, and Asian pallet sizes. The payload of the MD Series makes it an ideal choice for pallet-moving applications where pickup and drop-off stands can be used, reducing the need for equipment as well as the risk of injury. All OMRON mobile robots can be managed on the OMRON Fleet Manager platform, which is capable of controlling up to 100 mobile robots, so users can manage OMRON LD-60/90, LD-250, MD-650, MD-900, and HD-1500 mobile robots from a single, enterprise-level system.



# Dynamic Intelligent Safety

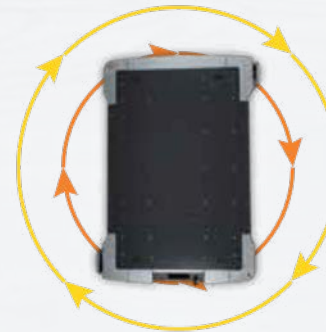
Omron mobile robots feature an innovative 360° safety system as well as an optional 180° patented vertical scanners. The intelligent safety system dynamically shifts between 70+ safety zones and patterns based on speed and rotation. The dynamic intelligent safety benefits users with increased safety performance, increased speed, and reduced false speed reduction or stops.

Integrated safety system includes:

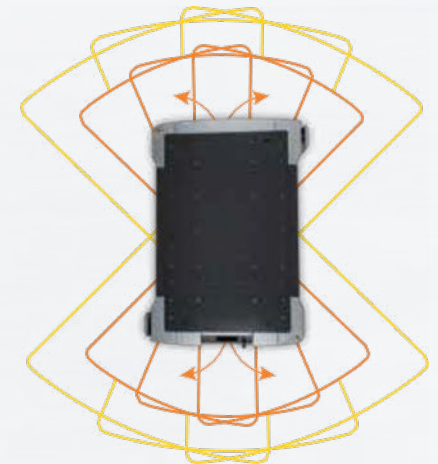
- OMRON NX-SL5 safety controller
- Avoids static and moving obstacles
- Redundant safety motion control
- Expandable safety-rated system for additional I/O, scanners, and sensors
- Fully compliant with ISO 3691-4 and ANSI/RIA R15.08 standards



Front and rear safety patterns



360° in-place safety pattern



Dynamic safety patterns based on speed and direction

■ Safety Zone

■ Warning Area

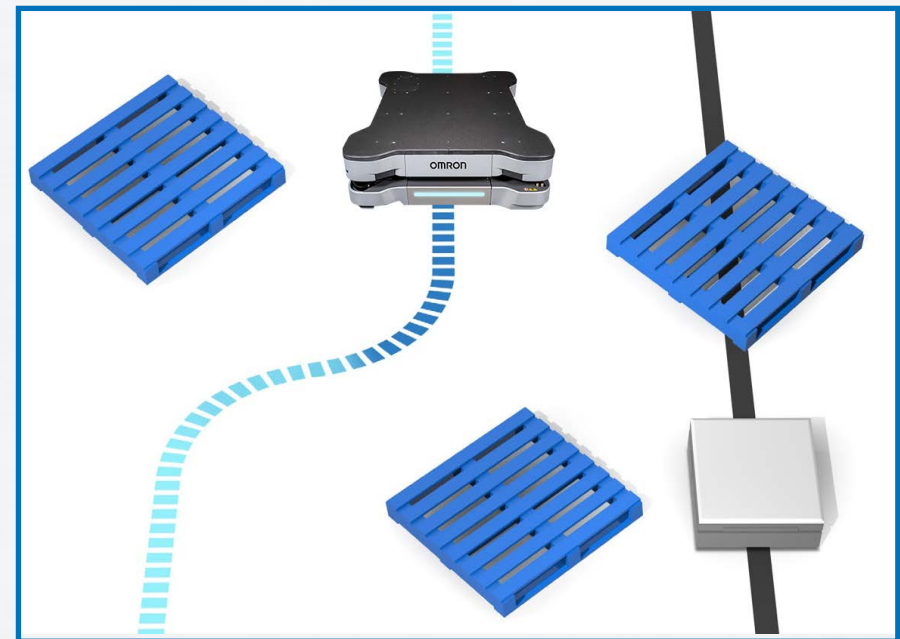


# AMRs vs AGVs

Automated guided vehicles (AGVs) require a predefined path to follow, either a network of magnetic lines on the floor or beacons on the walls. Although AGVs allow modifications to production lines, facilities will need to install new equipment every time the AGV path is changed, leading to downtime and extra costs.

Automated Mobile Robots (AMRs) can safely navigate without the use of floor magnets or wall-mounted beacons. An AMR will first create a baseline map of a facility using built-in sensors, then will constantly detect its surroundings. When processes change, AMRs can easily change as well, creating networks of new routes or being reassigned to new tasks.

	<b>OMRON AMR</b>	<b>AGV</b>
<b>Set Up</b>	Ready to go after simple mapping	Requires navigation guides
<b>Navigation</b>	Navigates autonomously and safely without physical guides	Needs guides, such as floor magnets or beacons
<b>Obstacles</b>	Safely avoids obstacles without stopping	Stops at obstacles and remains still until obstacles are removed
<b>Map Changes</b>	Easy	Factory Modifications
<b>Changing Destinations</b>	Easy	Factory Modifications
<b>Scalability</b>	Easy	Factory Modifications



Unlike autonomous mobile robots (AMRs), automated guided vehicles (AGVs) require guides, which restricts their options for routing.

# Product Features





# Flexible Functionality

OMRON's mobile robot solutions provide best-in-class versatility and can perform a wide variety of material handling tasks. OMRON is also scalable, so they can grow along with your business and automation needs.

The MD-650 boasts a class-leading top speed of 2.2 meters/second and the MD-900 comes in at 1.8 meters/second. Leveraging advanced battery and charging technologies, the MD Series provides eight hours of runtime with a charging time of less than 30 minutes for a industry-best 16:1 uptime ratio.



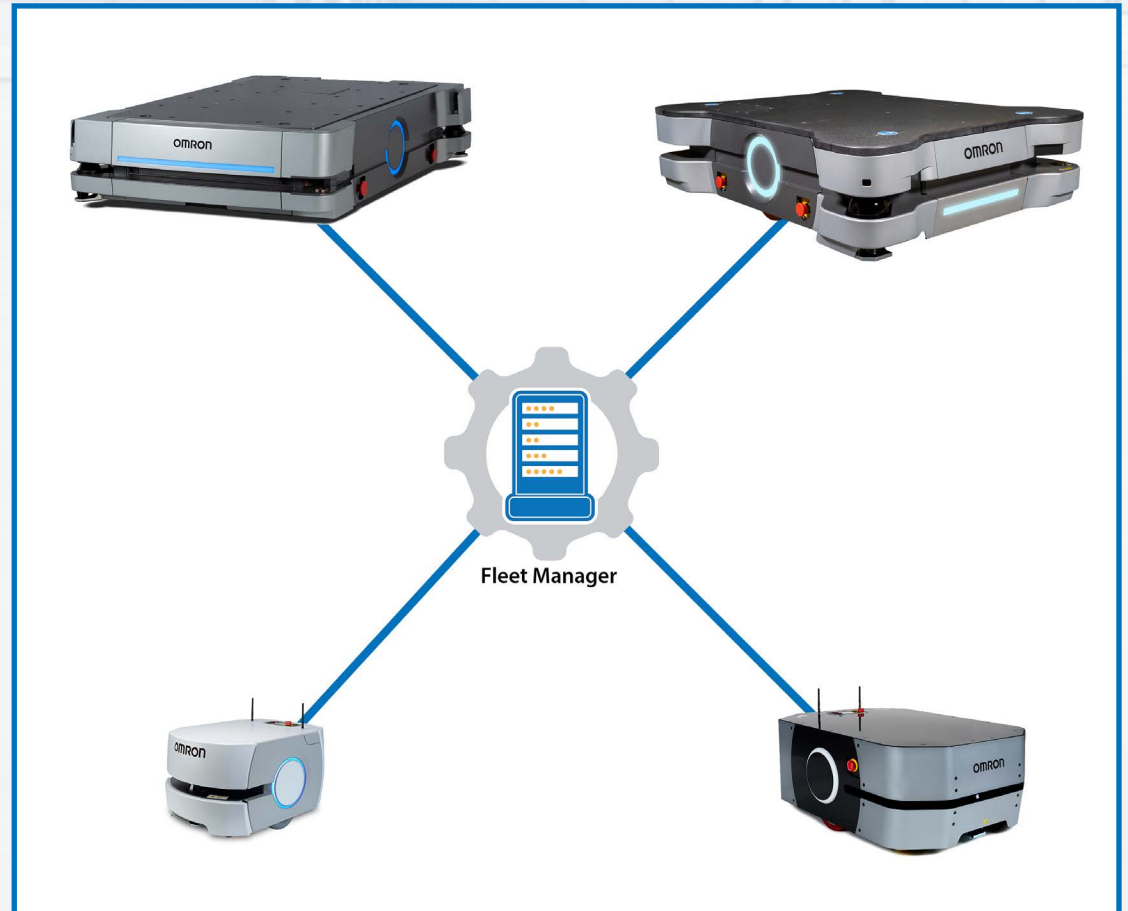
# Powerful Fleet Management

The OMRON Fleet Operations Workspace (FLOW) Core solution provides an intelligent fleet management system that monitors mobile robot locations, traffic flow, and job requests, ensuring your factory operates at peak efficiency.

The FLOW Core solution also reduces programming in your manufacturing execution system (MES) or enterprise resource planning (ERP) system by automating robot tasks.

## Key Functions

- Displays robot location and status
- Displays job queue
- Prioritizes important jobs
- Selects fastest routes based on human and robot traffic
- Identifies blocked paths and creates alternative routes
- Optimizes job assignments
- Optimizes battery charging



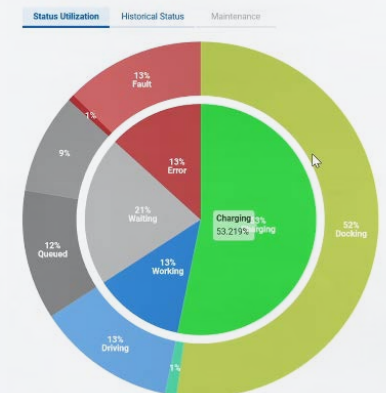
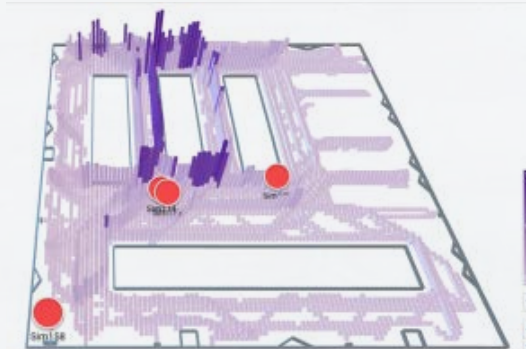


# FLOW iQ Fleet Operations Workspace iQ

FLOW iQ enhances the core user experience with powerful data collection and analytics through an intuitive user interface. Powerful visualization tools can generate graphics in real time. Information such as fault maps, robot path maps, robot utilization statistics give users the data the need to track and optimize their operations with quick and easy set up.

## Key Functions

- Quickly view robot status to monitor work to idle ratio and maximize productivity
- Visualize the impact of facility changes with the Localization Map
- Diagnose tricky network issues with the wireless diagnostics tools
- Track robot health with the fault map overlay over other analytics to find patterns
- Tailor fleet traffic with the Position Density Map to maximize cycle time and minimize time wasted in lockups



# OMRON Fleet Management Solutions

## Optimize Efficiency

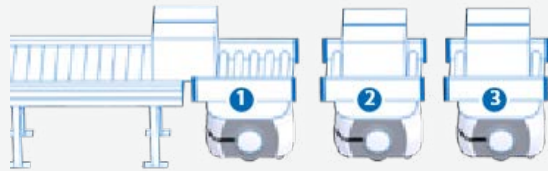
### 1. Intelligent Job Assignment

Reduces wasted time and movement by continuously looking ahead to anticipate which robots will be best positioned for upcoming tasks.



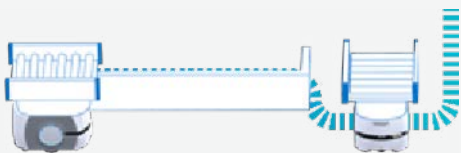
### 2. Managed Motion

Ensures smooth operations in busy environments by coordinating traffic flows and efficiently sequencing pick-up and drop-off at target locations.



### 3. Traffic Control

Notifies converging robots of their predicted paths, allowing them to recalculate and avoid collision in the most efficient way.



## Maximize Uptime

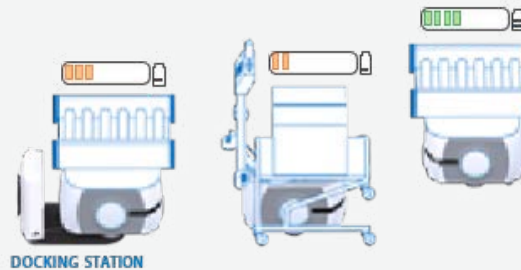
### 4. Automatic Updates

Performs updates automatically across the entire fleet



### 5. Charge Management

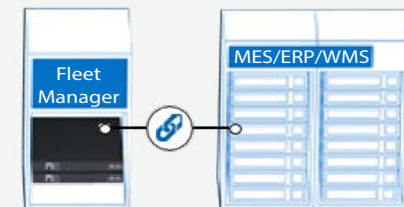
Tracks battery power of the entire fleet, directing robots to their nearest available, or preferred docking station on a schedule that ensures continuous fleet operation.



## Increase Flexibility

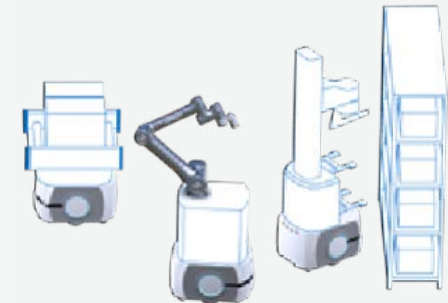
### 6. Easy Integration with IT Systems

Fleet Manager can connect to your MES, ERP, and WMS so that jobs can be propagated automatically to the fleet in real time.



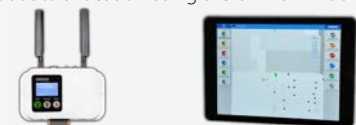
### 7. Skill Administration

Understands the capabilities of each vehicle in the fleet, and always makes sure that the right job is assigned to the right robot.



### 8. Easy-to-call Robots

Easily call a robot to a location using the OMRON Mobile I/O Box or Tablet





# OMRON Mobile Solution

OMRON supplies more than robots. They deliver a full ecosystem of automation technology to provide the best solution from one source. Fleet Operations Workspace is the software platform that puts you in complete control of your mobile robot workforce, improving productivity, throughput, and traceability.

Our Cell Alignment Positioning System (CAPS) uses markers to more effectively align robots at goals for better drop-offs and pick-ups.

Our patented Acuity Drive generates navigation markers from ceiling lights and objects to help identify positions of the robots, no matter how frequently the environment on the floor changes.

OMRON Fleet Analytics Engine stores fleet data and allows you to replay fleet activities.

OMRON Fleet Simulator easily simulates fleets of robots so you can fine-tune your fleet before deployment.

OMRON Fleet Manager coordinates mobile robots and provides traceability, job allocation, and traffic control across the entire fleet. A second Fleet Manager can also provide backup functionality.

With a payload of 1500 kg, the HD-1500 is designed to transport heavy duty payloads.

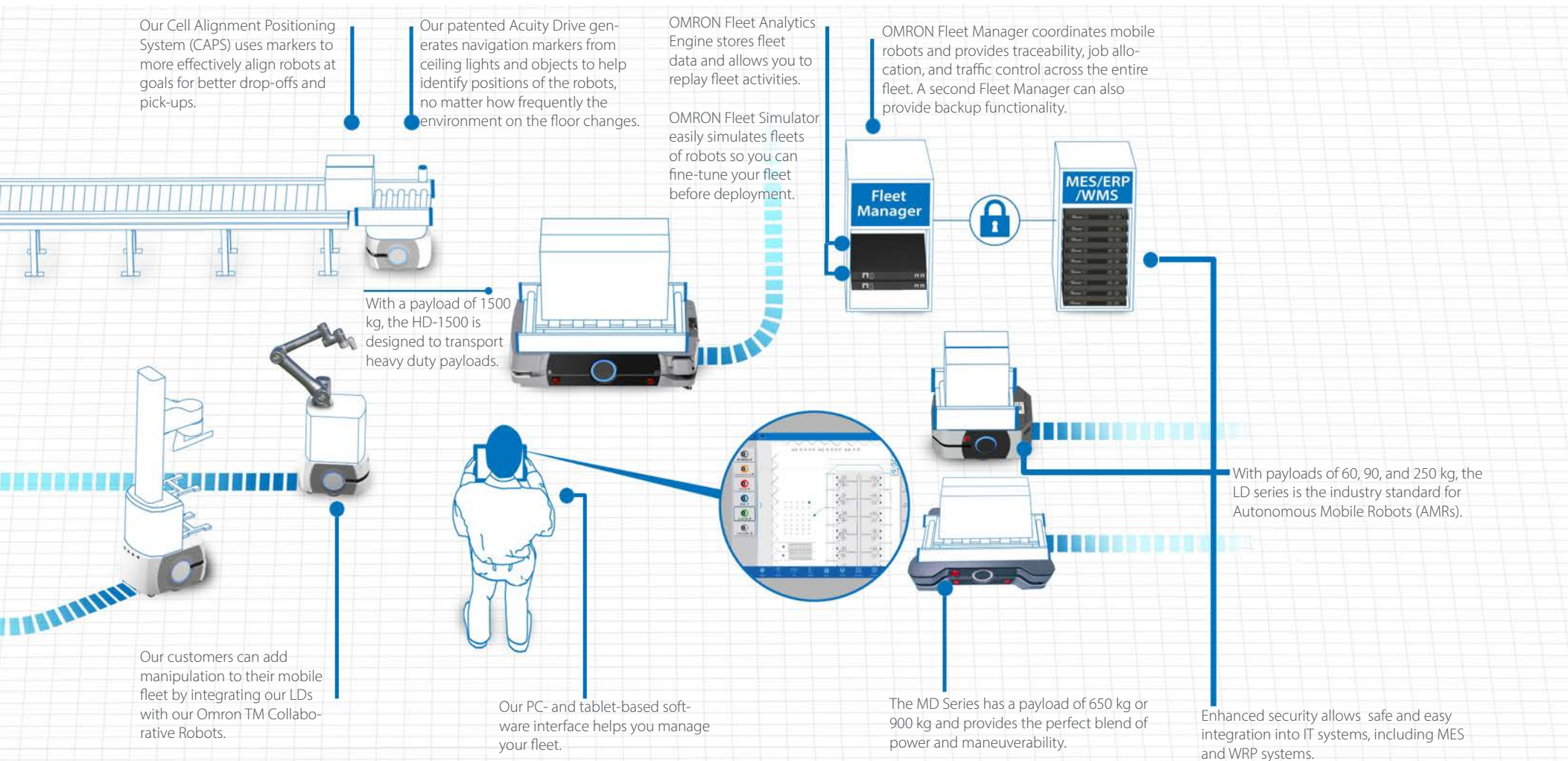
Our customers can add manipulation to their mobile fleet by integrating our LDs with our Omron TM Collaborative Robots.

Our PC- and tablet-based software interface helps you manage your fleet.

The MD Series has a payload of 650 kg or 900 kg and provides the perfect blend of power and maneuverability.

Enhanced security allows safe and easy integration into IT systems, including MES and WRP systems.

With payloads of 60, 90, and 250 kg, the LD series is the industry standard for Autonomous Mobile Robots (AMRs).



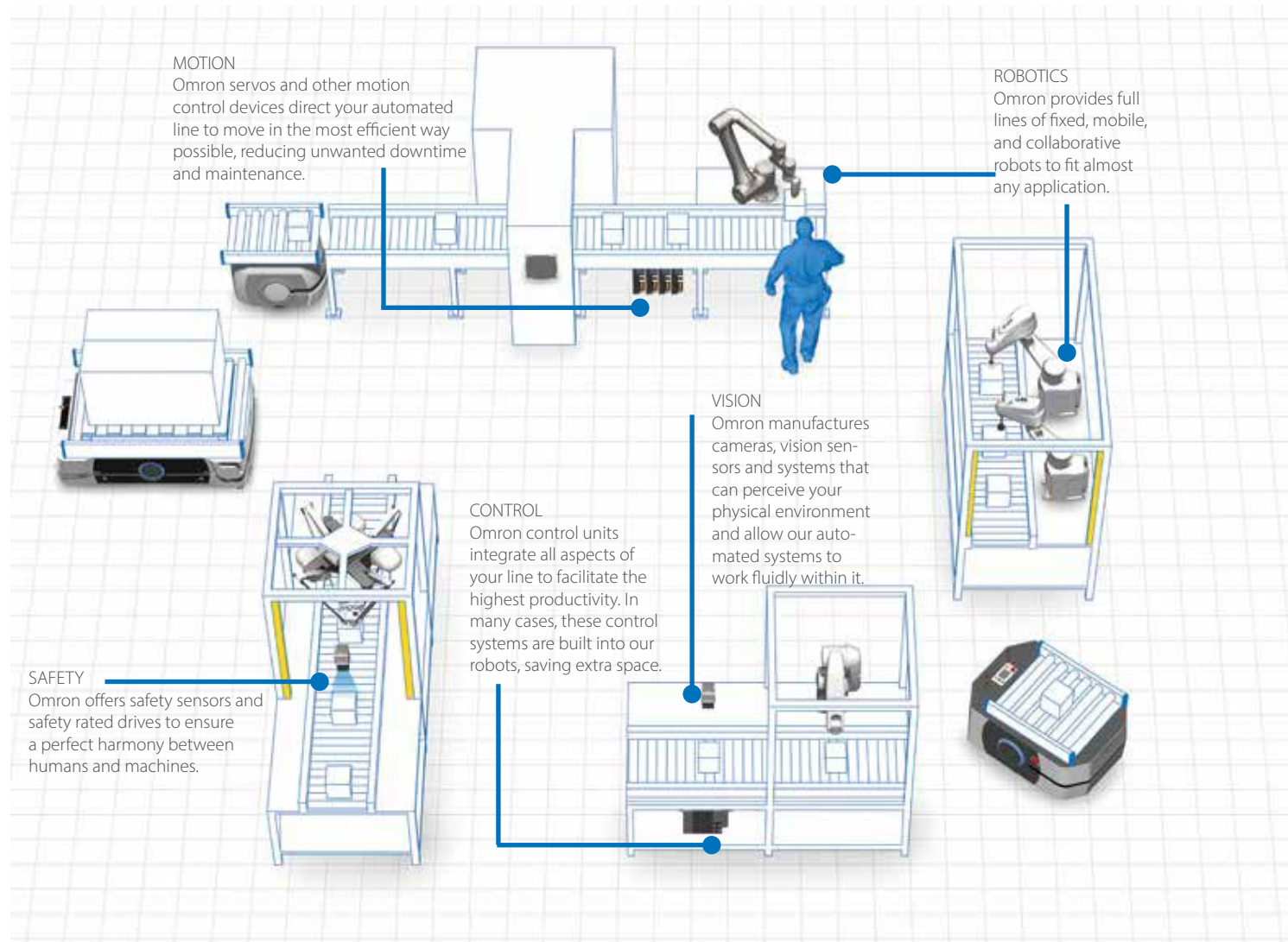


# Industrial Automation Solution

You need more than a piece of advanced hardware equipment; you need an autonomous material transport system flexible enough to evolve with changing needs. The Omron full family of automation technology fills in your entire production line.

As the leader in industrial automation, Omron offers products that help manufacturers fulfill the needs of mass customization, and address issues related to rising labor costs and labor shortages.

Along with mobile robots, Omron provides a variety of automation equipment and devices that range from control components and vision sensors to controllers and servomotors, as well as an array of safety devices and fixed robots.



# Your trusted partner in automation

When you work with Omron, you don't just get a robot — you get a fully integrated solution to meet the needs of your automated production.



## Integrated

Integrates with custom payloads  
such as conveyors  
Compatible with other OMRON Robots

## Intelligent

One fleet manager controls up to 100 robots  
Intuitive setup on PCs and tablets  
Works safely with people

## Interactive

Optimizes routing  
Adapts to changing conditions on the fly

# Made for Industry

As an industry leading provider of robotics and automation systems, Omron mobile robots are deployed in thousands of applications across multiple industries.



## Environmental Mobility

- Tire assembly
- Automotive electronics
- Automotive accessories
- Assembly and inspection

## Digital

- Semiconductor wafer manufacturing
- Semiconductor packaging and testing
- Mobile device manufacturing
- Solar panel manufacturing

## Food & Household Goods

- Stockroom transport
- Transport goods to assembly and sorting stations
- Scrap and refuse removal

## Medical

- Sterilization room transport
- Laboratory sample transport

## Logistics

- Material handling
- Parts transfer
- Non-conforming goods handling
- Reduced use of forklifts



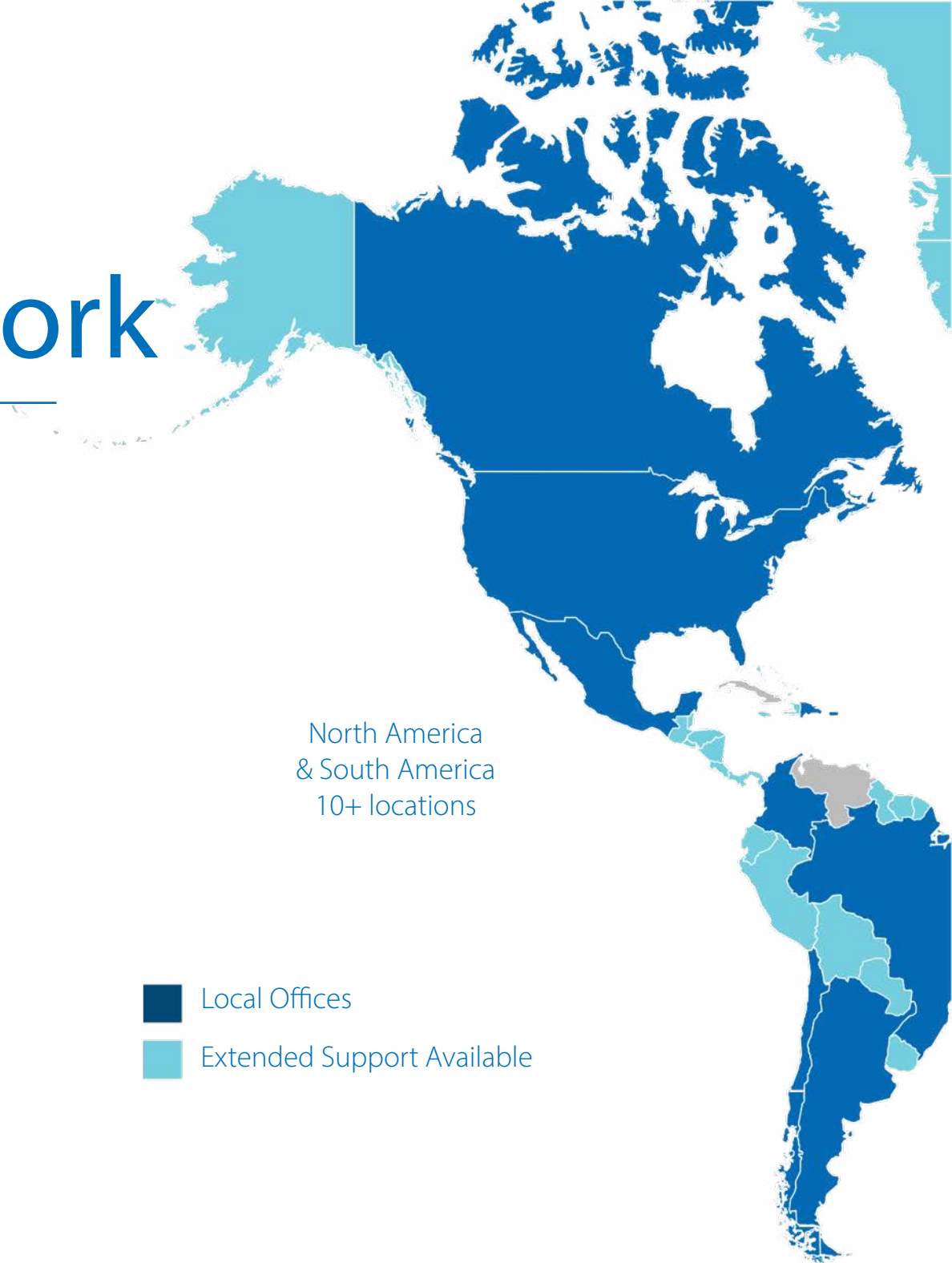
# Global service and support network

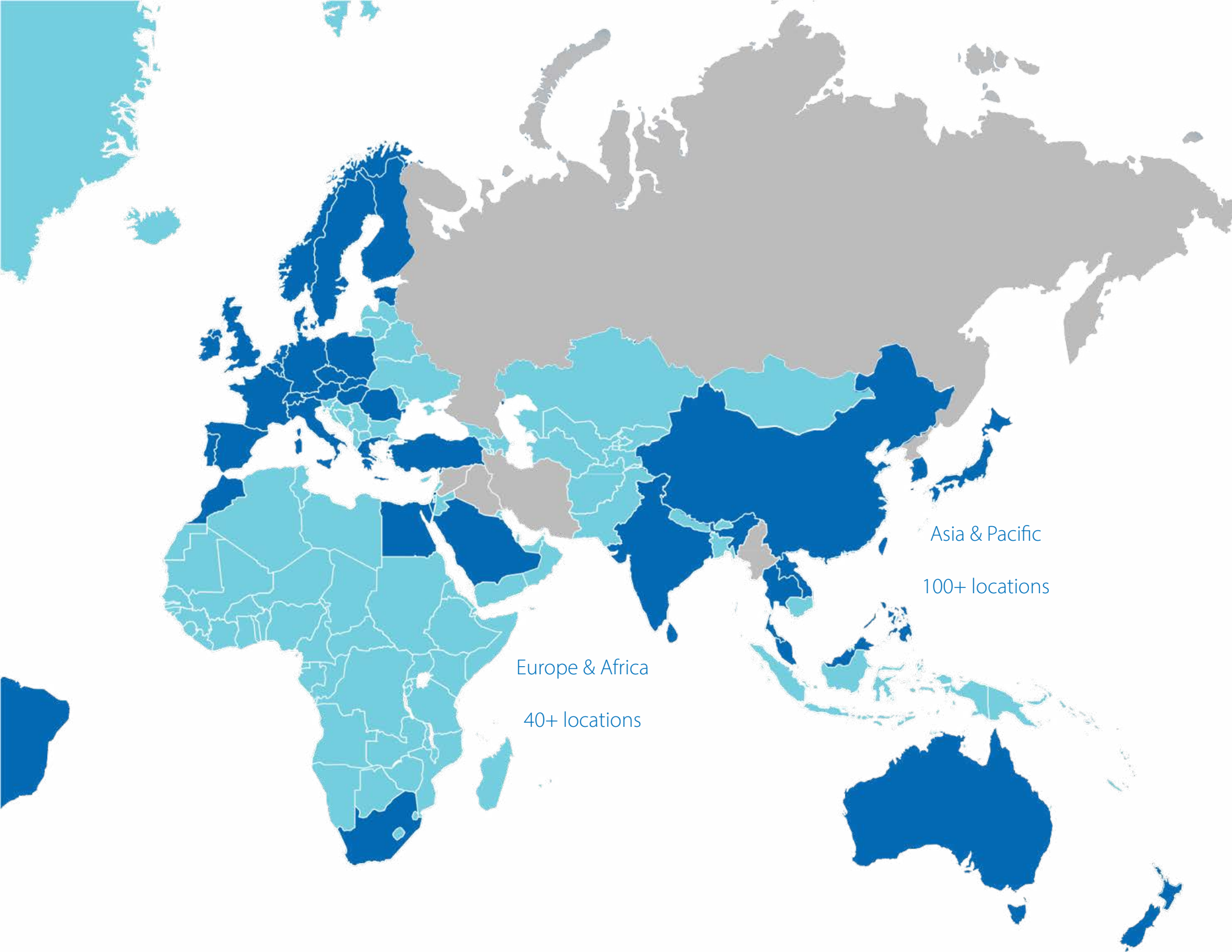
Omron offers service and support for its mobile solutions almost anywhere in the world, ensuring our solutions will run with minimal unwanted downtime.

150+ Locations,  
40+ Countries

North America  
& South America  
10+ locations

- Local Offices
- Extended Support Available





**OMRON AUTOMATION AMERICAS HEADQUARTERS**

Chicago, IL USA • 847.843.7900 • 800.556.6766 • automation.omron.com

**OMRON CANADA, INC. • HEAD OFFICE**

Toronto, ON, Canada • 416.286.6465 • 866.986.6766 • automation.omron.com

**OMRON ELECTRONICS DE MEXICO • HEAD OFFICE**

Ciudad de México • 52.55.5901.4300 • 01.800.386.6766 • mela@omron.com

**OMRON ELECTRONICS DE MEXICO • SALES OFFICE**

San Pedro Garza García, N.L. • 81.12.53.7392 • 01.800.386.6766 • mela@omron.com

**OMRON ELECTRONICS DE MEXICO • SALES OFFICE**

Eugenio Garza Sada, León, Gto • 01.800.386.6766 • mela@omron.com

**OMRON ELETRÔNICA DO BRASIL LTDA • HEAD OFFICE**

São Paulo, SP, Brasil • 55 11 5171-8920 • automation.omron.com

**OMRON ARGENTINA • SALES OFFICE**

Buenos Aires, Argentina • +54.11.4521.8630 • +54.11.4523.8483  
mela@omron.com

**OTHER OMRON LATIN AMERICA SALES**

+54.11.4521.8630 • +54.11.4523.8483 • mela@omron.com

*Authorized Distributor:***Controllers & I/O**

- Machine Automation Controllers (MAC) • Motion Controllers
- Programmable Logic Controllers (PLC) • Temperature Controllers • Remote I/O

**Robotics**

- Industrial Robots • Mobile Robots

**Operator Interfaces**

- Human Machine Interface (HMI)

**Motion & Drives**

- Machine Automation Controllers (MAC) • Motion Controllers • Servo Systems
- Frequency Inverters

**Vision, Measurement & Identification**

- Vision Sensors & Systems • Measurement Sensors • Auto Identification Systems

**Sensing**

- Photoelectric Sensors • Fiber-Optic Sensors • Proximity Sensors
- Rotary Encoders • Ultrasonic Sensors

**Safety**

- Safety Light Curtains • Safety Laser Scanners • Programmable Safety Systems
- Safety Mats and Edges • Safety Door Switches • Emergency Stop Devices
- Safety Switches & Operator Controls • Safety Monitoring/Force-guided Relays

**Control Components**

- Power Supplies • Timers • Counters • Programmable Relays
- Digital Panel Meters • Monitoring Products

**Switches & Relays**

- Limit Switches • Pushbutton Switches • Electromechanical Relays
- Solid State Relays

**Software**

- Programming & Configuration • Runtime